



# PEARLS OF GRACE

Beautiful | Elegant | Timeless

李二平



Grace Li Wang



# Introduction

Pearls of Grace offers a wide selection of beautiful freshwater pearl jewelry. Tastefully designed, our necklaces showcase a woman's beauty, her sophistication, and her mystic. You can choose classic white, ivory, or multicolor pearls in either regular or long length. Many designs offer matching earrings and bracelets.

Planning a wedding or special event? Make your occasion more memorable with a custom design of pearls and/or pumice stone on leather. Through Pearls of Grace, you can express your individuality through jewelry. Pearls are always elegant and memorable!

## OUR STORY

Many jewelry designs are unique creations of North Carolina-based artist Grace Li Wang. In her main artistic work, she uses mixed media to create award-winning, stunning landscapes and portraits in radiant colors. Through Pearls of Grace, she offers sophisticated pearl concepts to be worn for any occasion.

Whether you choose to wear a classic design, one of Grace's original jewelry designs, or arrange for a custom piece, Pearls of Grace will deliver the elegance and artistry you desire!

This Catalog is a representation of our Pearls Collection, please contact Grace for additional pearls items, custom designs or any inquiries.

To learn more about Grace and view her digital art gallery, visit: [www.graceliwang.com](http://www.graceliwang.com)

Contact Grace at: [graceliwang@gmail.com](mailto:graceliwang@gmail.com) or Cell phone: 919-412-6803

## TERMS AND POLICY

Refund or exchange policy: We can only honor requests made within 30 days of receiving the item.

Custom orders: These orders require a deposit of ½ of the order price. A cancellation fee applies to the full deposit fee.

## Catalog Credits:

Photography and design by Michael Mitchell

Text by D. S. Provance

Grace Li Wang©2018. All rights reserved.

Classical Group



Accessory Group



Contemporary Group



Miscellaneous Group



Shell Group







**3 White Oval Pearls Earrings**  
three white oval pearls individually connected to hook backing by delicate metal links.

Catalog #3107

**White-Silver 9mm Pearl Necklace**  
a necklace composed of a strand of round pearls with the front center focus comprised of the alternating white and silver 9mm pearls.



Catalog #1501

**Double Strand White Pearl Flower Clasp Bracelet**  
a double stranded bracelet made of a string of round pearls, each pearl 8mm in diameter, with a silver tone locking clasp in the shape of a chrysanthemum flower.

Catalog #3650







### **Black and White Necklace**

a knotted string of the classic 6 round black pearls (9mm) with white pearls, with your choice of clasp; 18 in.

Catalog #1701



### **Pearl and Jade Necklace**

5 blush pink jade stones as the center focus with white pearls strung on a black leather strand with a pearl-noose clasp; matching earrings included when you buy as a set or sold individually.



Catalog #2101





20 in  
Catalog #1202

**White-Blush-Silver pearl necklace**

a string of 9mm pearls arranged in an alternating pattern of white, blush, and silver round pearls to form the necklace. This type of necklace comes in different lengths.

24 in  
Catalog #1203







**Classic Black Pearl Necklace**

a knotted string of classic round black pearls  
(8-9 mm) with your choice of clasp; 17-18 in.

Catalog #205





**White Black and Silver Pearl Necklace**

a knotted string of round white, black, and gray pearls (8-9 mm) with your choice of clasp; available in 17-18 in, or 24 in lengths.

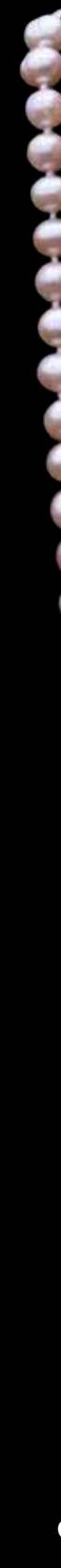
18 in

Catalog #1002

24 in

Catalog #1003





**Blush Pearl Necklace**

a knotted string of blush pink pearls (8-9 mm) with your choice of clasp.

18 in  
Catalog #302

30 in  
Catalog #303

[www.graceliwang.com](http://www.graceliwang.com)



O-Ring clasp  
Catalog #3602



**White Pearl Bracelet**

an elegant bracelet with either an O-ring clasp or a gold tone clasp, pearls (8-9mm), 7.5 in length.

Gold tone clasp  
Catalog #3601





### Classic White Pearl Necklace

a knotted string of classic round white pearls in 7-8mm or 9-10mm, with your choice of clasp.

7-8mm pearls  
Catalog #100

9-10mm pearls  
Catalog #101





**Black and White Necklace**

a knotted string of classic 2 round black pearls on white (8-9 mm) with your choice of clasp; 17-18 in.

Catalog #1701





### White Black and Gray Pearl Necklace

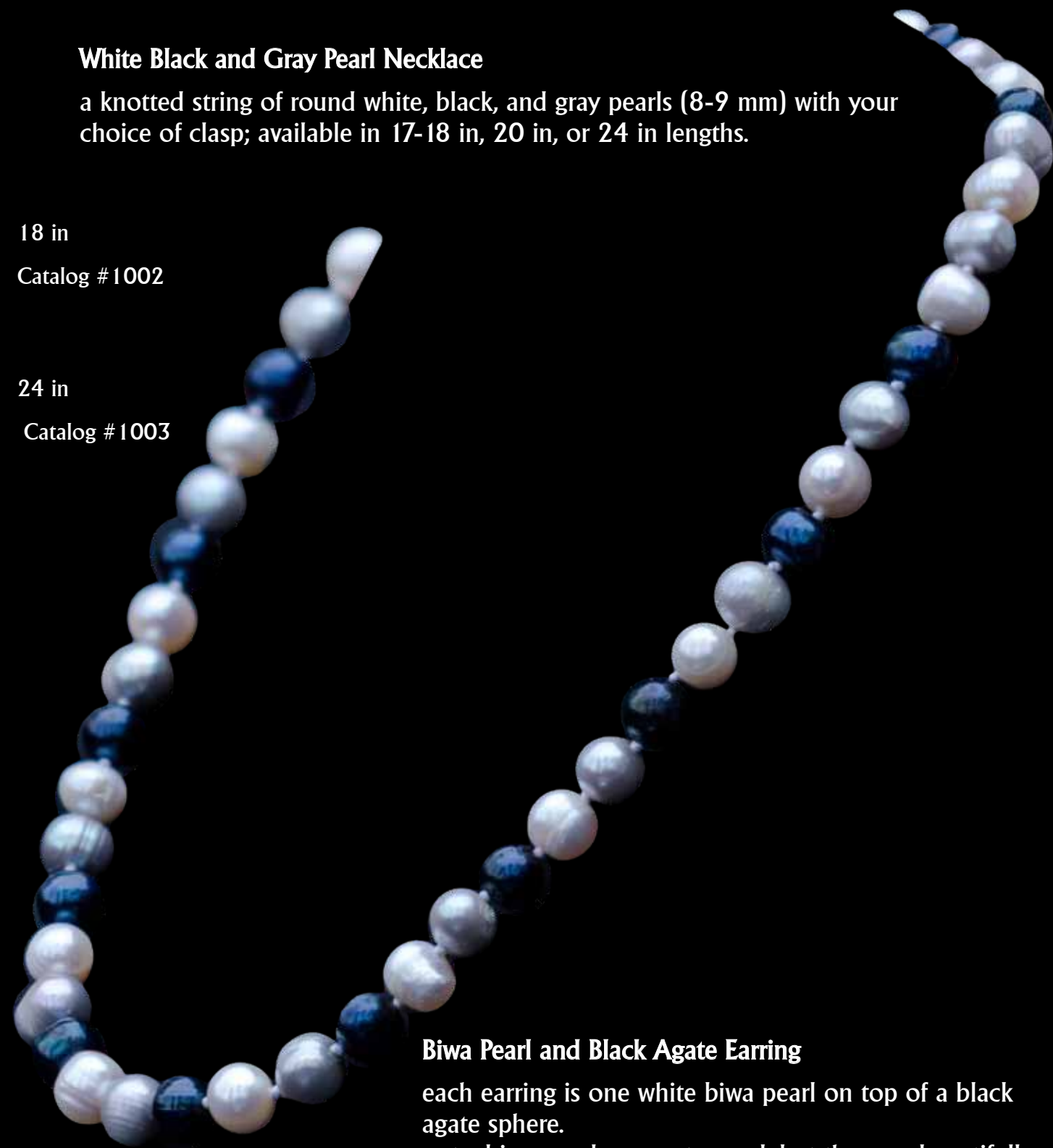
a knotted string of round white, black, and gray pearls (8-9 mm) with your choice of clasp; available in 17-18 in, 20 in, or 24 in lengths.

18 in

Catalog #1002

24 in

Catalog #1003



### Biwa Pearl and Black Agate Earring

each earring is one white biwa pearl on top of a black agate sphere.

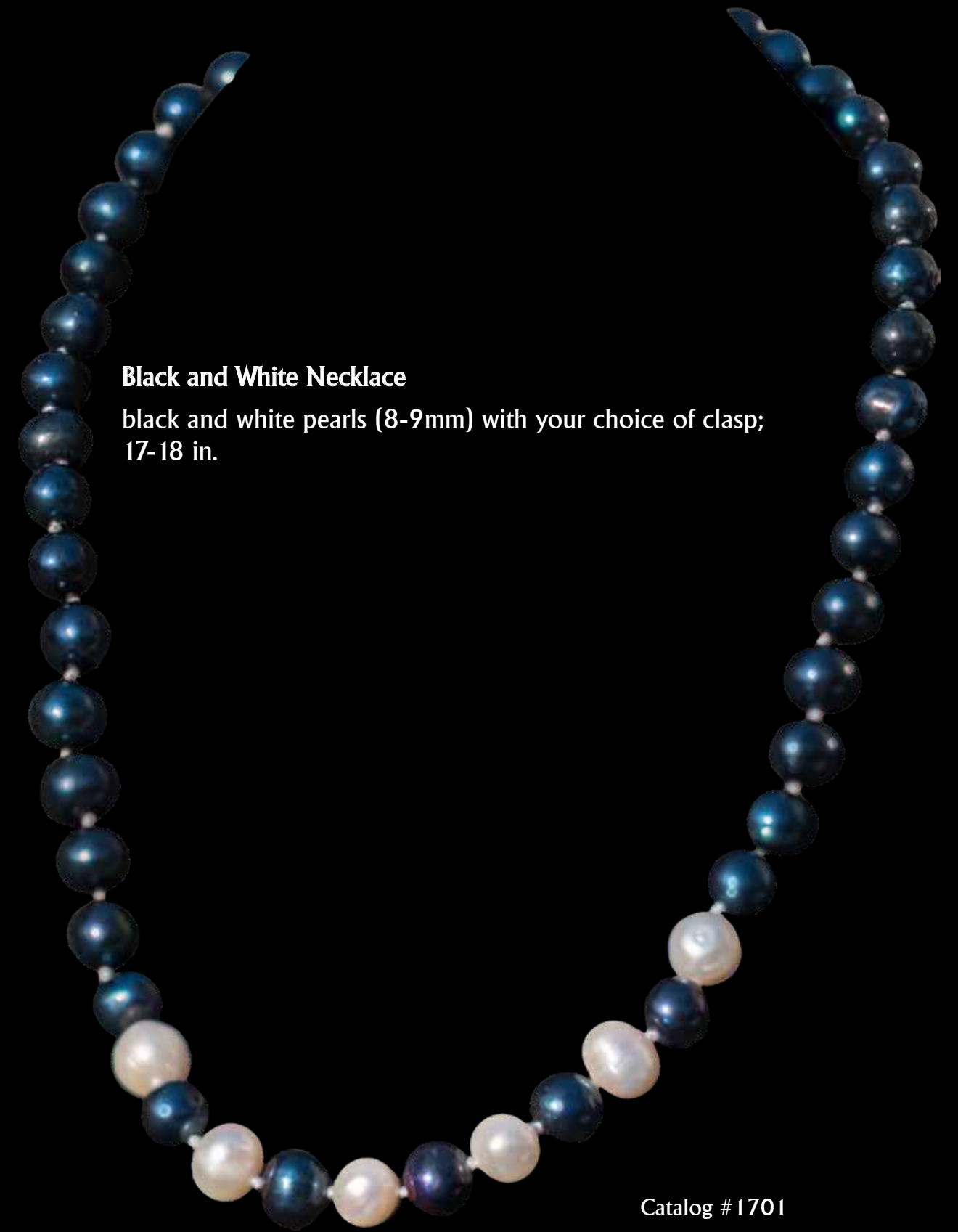
note: biwa pearls are not round, but they are beautifully unique! Browse our shop for more pearl jewelry types;

- \* 6mm round black agate
- \* dangling earring
- \* white biwa pearl
- \* hook backing



Catalog #3203





**Black and White Necklace**

black and white pearls (8-9mm) with your choice of clasp;  
17-18 in.

Catalog #1701





Catalog #121

### Teardrop Pearl Earrings

one set of teardrop shaped pearls on  
hook backed gold tone earrings;

- \* 7-9mm white pearls
- \* hook backing



Catalog #3301

### Natural Baroque White Pearl Necklace

an elegant necklace with white baroque style pearls on a hand knotted  
strand.

note: baroque style pearls are not round; it is a naturally uneven but  
beautiful and unique look;

- \* easy to open, yet stylish spring ring (O-ring) clasp
- \* 18 inches
- \* 7-9mm white baroque pearls





### Black Oval Pearl Necklace

a knotted string of black oval pearls (8-9mm) with your choice of clasp;  
17-18 in.



Silver clasp

Catalog #251

O-ring clasp

Catalog #252





### Hanging Stone Earrings

a pair of amber color stone earrings  
with metal backing;

\*hook backing



Catalog #2503

### Multicolor Stone and Pearl Necklace

vibrant stone and white oval pearl  
necklace linked with delicate  
metal rings, 30 in length.



Catalog #2501

### Multicolor Stone and Pearl Bracelet

vibrant stone and white oval pearl  
bracelet linked with delicate  
metal rings, 8 in length.



Catalog #2502





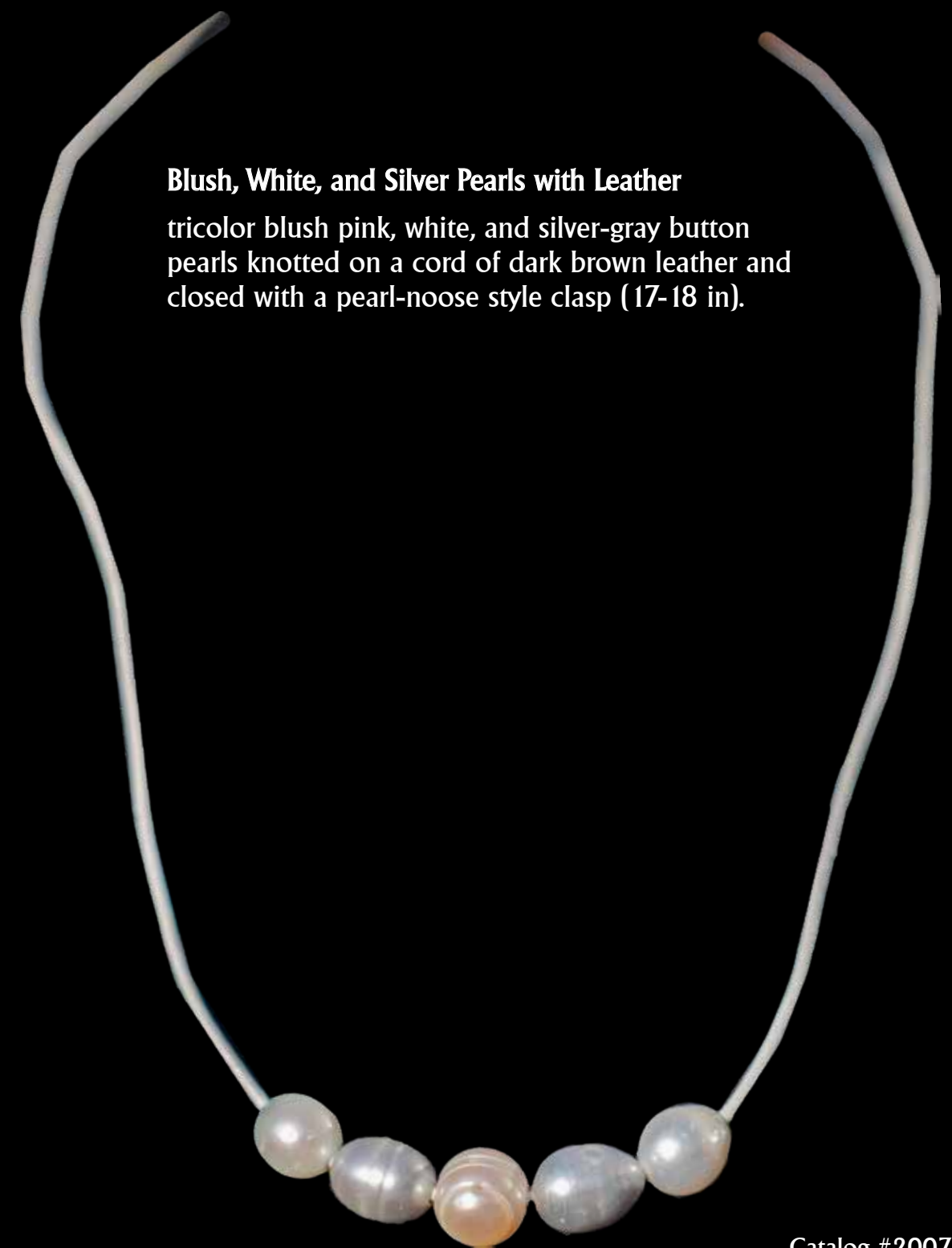
**Silver Pearls on White Leather**

5 silver-gray button pearls strung on a cord of white leather and closed with a pearl-noose style clasp (17-18 in).



Catalog #2008





**Blush, White, and Silver Pearls with Leather**

tricolor blush pink, white, and silver-gray button pearls knotted on a cord of dark brown leather and closed with a pearl-noose style clasp (17-18 in).

Catalog #2007



# Biwa Pearls - Matching Set of Necklace, Bracelet and Earring

## Biwa Pearl Earring

each earring is one white biwa pearl on top of a white pearl

note: biwa pearls are not round, but they are beautifully unique! browse our shop for more pearl jewelry types;

- \* with white biwa pearl
- \* 6mm round white
- \* dangling earring
- \* hook backing



Catalog #3201

## Biwa Pearl Necklace

a striking statement piece necklace made of round white pearl, white biwa pearl on a knotted strand.

Note: biwa pearls are irregularly shaped pearls they are uncommon, but beautiful and this is their natural shape;

- \* white biwa pearl
- \* white round pearl
- \* 17 in
- \* easy to use, yet stylish spring ring (O-ring) clasp



Catalog #3501



Catalog #151

## Biwa Pearl Bracelet

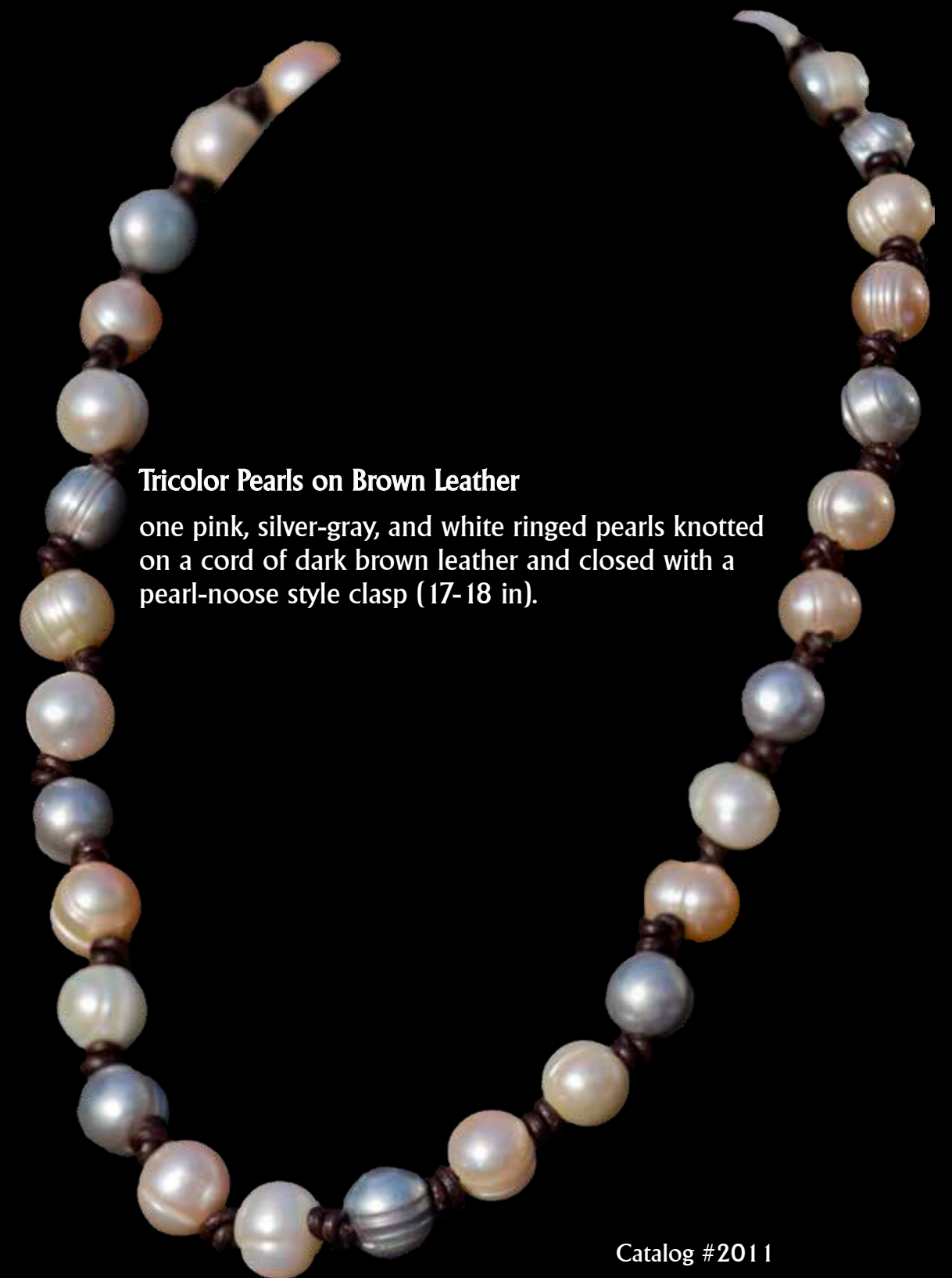
a striking statement piece necklace made of round white pearls, white biwa pearls organized in an alternating pattern.

note: the biwa pearls are the irregularly shaped pearls - they are uncommon, but beautiful and this is their natural shape! white round pearl, white biwa pearl. 7 in length.



Catalog #3502





**Tricolor Pearls on Brown Leather**

one pink, silver-gray, and white ringed pearls knotted on a cord of dark brown leather and closed with a pearl-noose style clasp (17-18 in).

Catalog #2011





## Biwa and Round Pearl Necklace

a striking statement piece necklace made of round white pearl, white biwa pearl on a knotted strand.

note: biwa pearls are irregularly shaped flat pearls - they are uncommon but beautiful and this is their natural shape;

\* white round agate

\* white round pearl

\* white biwa pearl

\* 17 in

\* easy to use, yet stylish spring ring (O-ring) clasp



Catalog #151



Close up of the O-ring

## Horizontal Biwa and Black Agate Earring

each earring is one white biwa pearl on top of a black agate sphere.

note: biwa pearls are not round, but they are beautifully unique! Browse our shop for more pearl jewelry types;

\* 6mm round black agate

\* dangling earring

\* white biwa pearl

\* hook backing



Catalog #152





### Tricolor Pearls on White Leather

white, silver-gray, and black pearls knotted on a cord of white leather and closed with a pearl-noose style clasp (17-18 in).



Catalog #2010

### Pearl Earrings (8mm)

a set of classic pearl earrings in the color of your choice.



Catalog #3101





### Brick Red Pumice Stone and Pearl Necklace

6 brick red pumice stones and 6 black pearls strung on a dark brown leather strand with a pearl-noose clasp; matching earrings included when you buy as a set or sold individually;

\*natural texture of the pumice may not be suitable for wear against more delicate fabrics



Catalog #2202



Catalog #2201

### Black Pearls and Rust Pumice Earrings

earrings with a black pearls and rust colored sand pumice stone dangling from leather strands.





### Amber Pumice Stone and Pearl Necklace

5 amber pumice stones and 6 silver pearls strung on a black leather strand with a pearl-noose clasp; matching earrings included when you buy as a set or sold individually;

\*natural texture of the pumice may not be suitable for wear against more delicate fabrics

Catalog #2204



### Amber Pumice Stone and Pearl Earrings

earrings with a silver pearls and amber pumice stone dangling from leather strands.

Catalog #2203





### Sea Green Pumice Stone and Pearl Necklace

5 sea green pumice stones and 6 white pearls strung on a black leather strand with a pearl-noose clasp; matching earrings included when you buy as a set or sold individually;

\*natural texture of the pumice may not be suitable for wear against more delicate fabrics



Catalog #2205





### **White Pumice Stone and Blush Pearl Necklace**

5 white pumice stones and 6 blush pearls strung on a black leather strand with a pearl-noose clasp; matching earrings included when you buy as a set or sold individually;

\*natural texture of the pumice may not be suitable for wear against more delicate fabrics

Catalog #2207

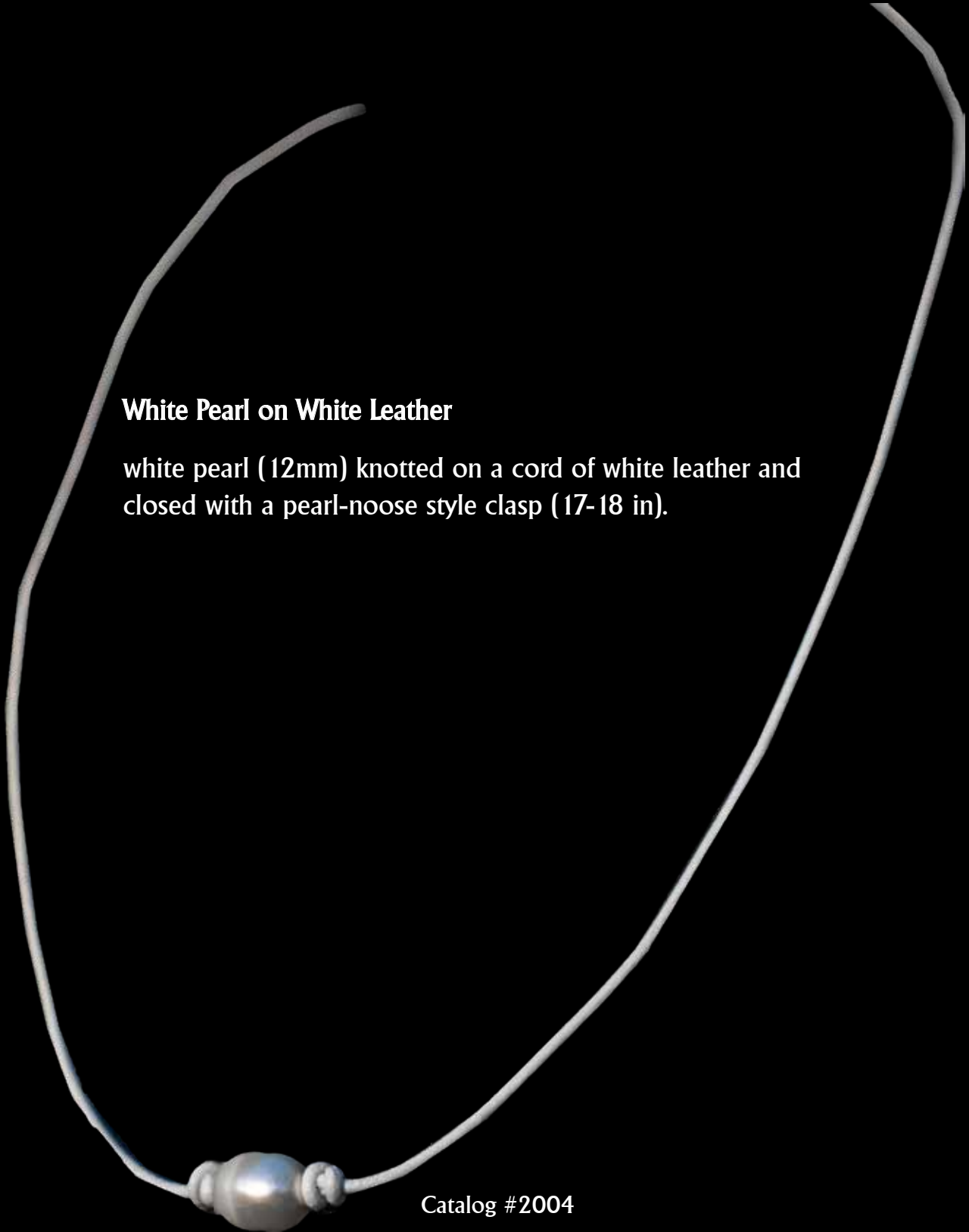






**White Pearl on White Leather**

white pearl (12mm) knotted on a cord of white leather and closed with a pearl-noose style clasp (17-18 in).



Catalog #2004





### Silver Pearl on White Leather

silver pearl (12mm) knotted on a cord of white leather and closed with a pearl-noose style clasp (17-18 in).



Catalog #2002





### Classic White Pearl Necklace

a knotted string of classic round white pearls (8-9 mm)  
with your choice of clasp.



30 in

Catalog #105



17 in

Catalog #100

O-ring clasp











### Dewdrop Pearl Earrings

- one set of round pearl studs with two white spherical pearls attached on a silver tone chain;
- \* 7-8mm white pearls
- \* butterfly earring backing
- \* intended for earlobe piercings

Catalog #3106



### Pearl Earrings

a set of classic pearl earrings (8mm) in the color of your choice.



Black  
Catalog #3102



Blush  
Catalog #3103

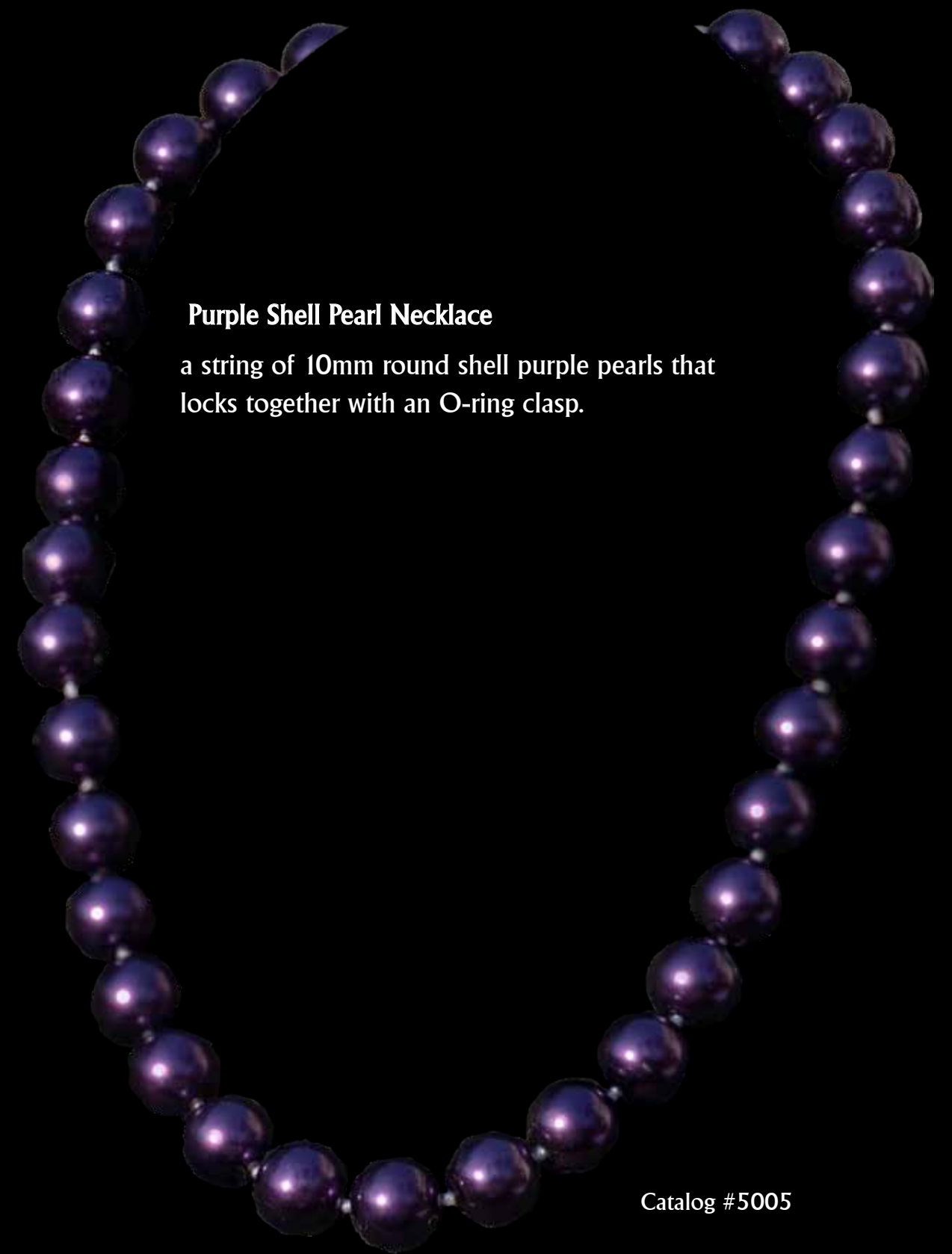


Pink  
Catalog #3105









**Purple Shell Pearl Necklace**

a string of 10mm round shell purple pearls that  
locks together with an O-ring clasp.

Catalog #5005





**White Shell Pearl Necklace**

a string of 14mm round shell White pearls that locks together with an O-ring clasp.

**White Pearl Stud Earrings**

a pair of 8mm white round earrings with a simple stud lock back.

Catalog #3101

Catalog #5003





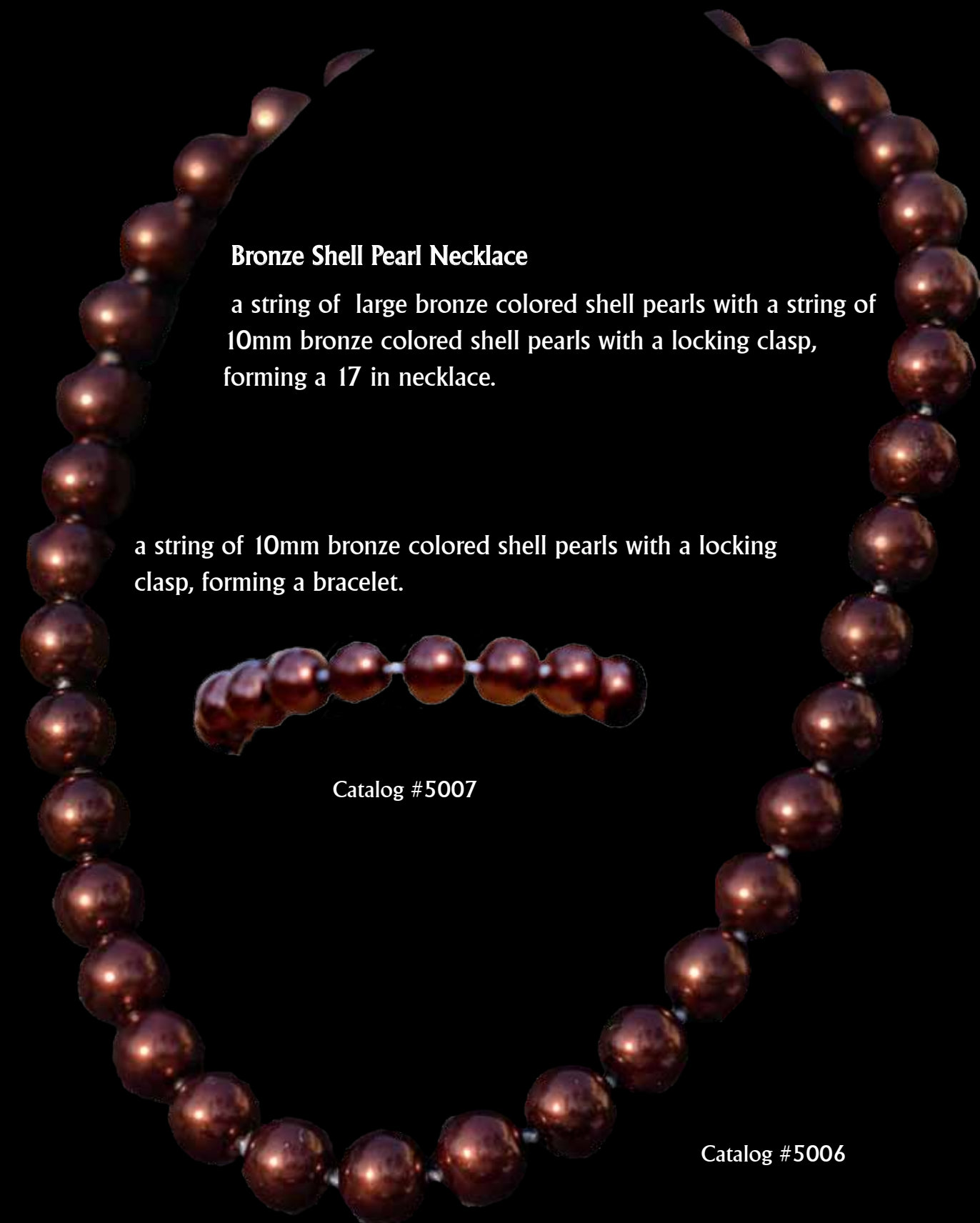
**Black Shell Pearl Necklace**

a string of 9mm black shell pearls with a magnetic "jewel tone" (gold/silver tone) locking clasp inlaid with clear gems.

Catalog #5001

[www.graceliwang.com](http://www.graceliwang.com)





**Bronze Shell Pearl Necklace**

a string of large bronze colored shell pearls with a string of 10mm bronze colored shell pearls with a locking clasp, forming a 17 in necklace.

a string of 10mm bronze colored shell pearls with a locking clasp, forming a bracelet.

Catalog #5007

Catalog #5006



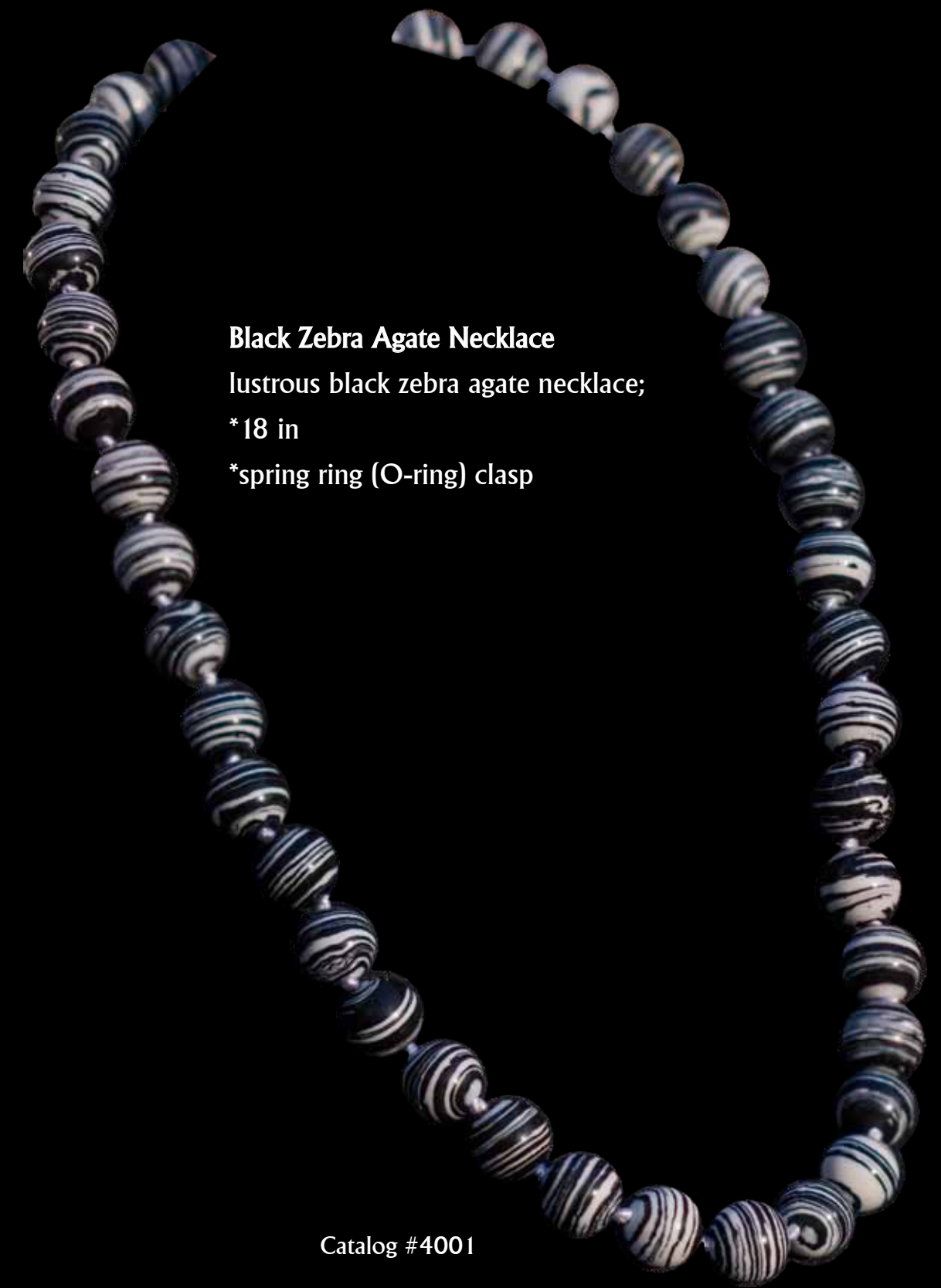


**Black Shell Pearl Necklace**

a string of 10mm round shell black pearls that locks together with an O-ring clasp.

Catalog #5002





**Black Zebra Agate Necklace**

lustrous black zebra agate necklace;

\*18 in

\*spring ring (O-ring) clasp

Catalog #4001

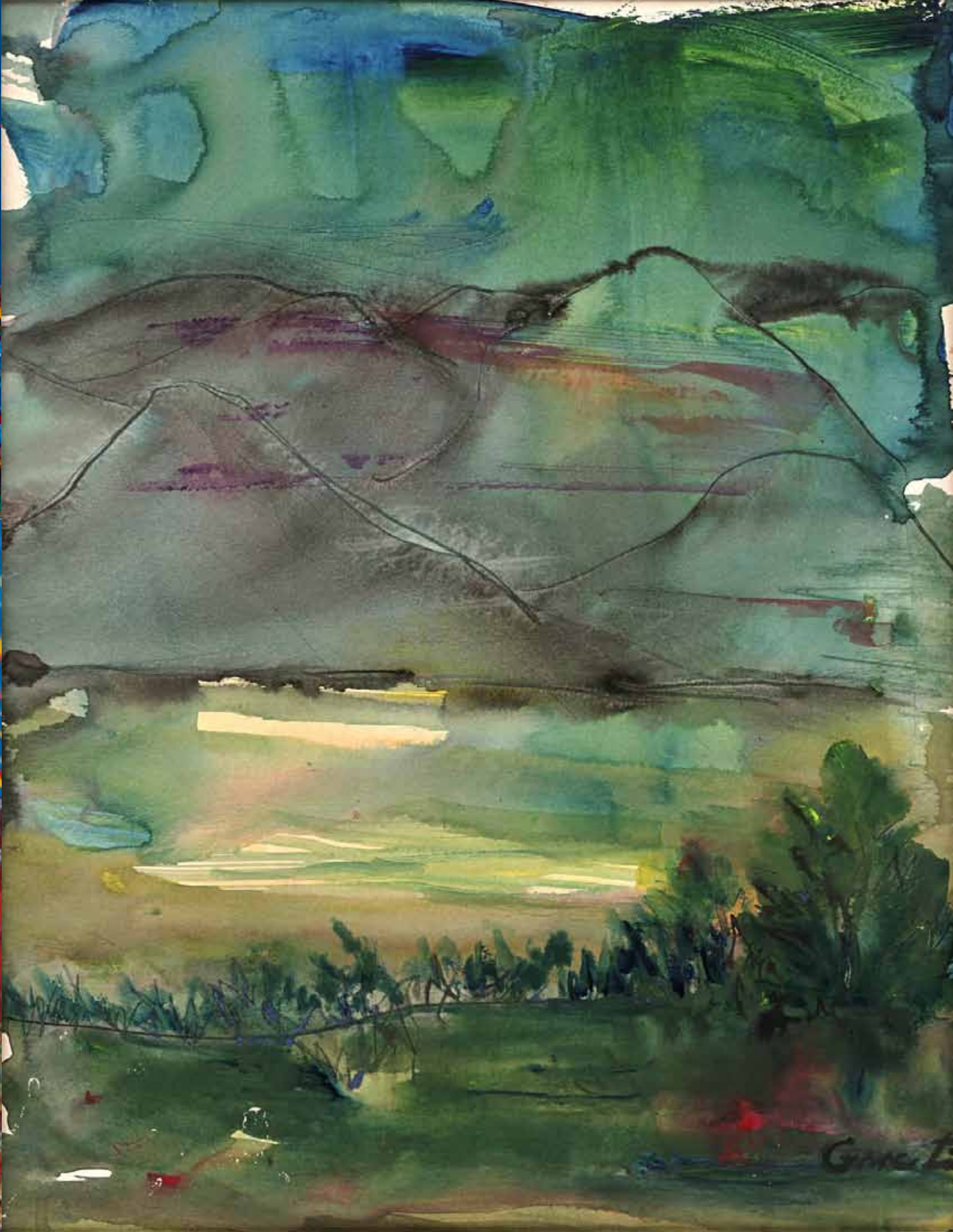














# PEARLS OF GRACE

Pearls are beautiful, timeless and essential.